

AGENDA

Meeting: WESTBURY AREA BOARD
Place: The Paragon Hall, Haynes Road, Westbury, Wilts BA13 3HA
Date: Thursday 7 April 2011
Time: 7.00 pm

Including parishes of Bratton, Coulston, Dilton Marsh, Edington, Heywood and Westbury

The Area Board welcomes and invites contributions from members of the public. The chairman will try to ensure that everyone who wishes to speak will have the opportunity to do so.

If you have any requirements that would make your attendance at the meeting easier, please contact your Democratic Services Officer.

Refreshments and networking opportunities will be available from 6:30pm.

Please direct any enquiries on this Agenda to Anna Thurman (Democratic Services Officer), on 01225 718379 or email anna.thurman@wiltshire.gov.uk
Or Sally Hendry (Westbury Community Area Manager), Tel: 01373 864714 or email sally.hendry@wiltshire.gov.uk

All the papers connected with this meeting are available on the Council's website at www.wiltshire.gov.uk

Press enquiries to Communications on direct lines (01225) 713114 / 713115.

Wiltshire Councillors

Cllr David Jenkins (Chairman)	Westbury North	01373 823605 07941 201637
Cllr Julie Swabey (Vice Chairman)	Ethandune	01380 830043 07794 846698
Cllr Michael Cuthbert- Murray	Westbury East	07738 873640
Cllr Russell Hawker	Westbury West	01373 822275

Items to be considered	Time
<u>Map to venue</u>	
1. Chairman's Welcome and Introduction	
2. Apologies for Absence	
3. Declarations of Interest	
Councillors are requested to declare any personal or prejudicial interests or dispensations granted by the Standards Committee.	
4. Chairman's Announcements (<i>Pages 3 - 6</i>)	
Chairman's Announcements:	
a) End of Life Care	
b) Localism Bill – Code of Conduct	
c) There will be an additional meeting to discuss the Big Society, localism and what it means for Westbury area on 12 April at 6pm, The Laverton, Bratton Road, Westbury.	
5. Minutes (<i>Pages 7 - 22</i>)	5 mins
To confirm the minutes of the meeting held on 3 February 2011.	
6. Partner Updates (<i>Pages 23 - 32</i>)	
To receive any updates from partners – Parish and Town Councils, Police, Fire and Rescue Service, BA13+Community Area Partnership, NHS Chamber of Commerce and CAYPIG.	15 mins
7. Proposed Waste Sites in the Westbury Area	
Councillor John Brady, Cabinet Member for Economic Development, Planning and Housing will present the Draft Waste Site Allocations Development Plan Document and the potential impact on the Westbury Community Area.	10 mins
8. Campus and Operational Delivery Programme including the Future of Leisure Facilities in the Westbury Area	
To receive a presentation and question and answer session on the Campus and Operational Delivery Programme, including Leisure, from Programme Director Mark Stone and Project Manager Lucy Murray-Brown.	30 mins

9.	<p>Westbury Landscape</p> <p>To receive a presentation from Maxine Russell, Landscape Officer and Charles Routh from English Heritage.</p>	15 mins
10.	<p>Extended Service (ES)</p> <p>To receive a presentation and question and answer session, from Sarah Hopkins ES Network Co-ordinator.</p>	10 mins
11.	<p>Results and Feedback from the Library Review (<i>Pages 33 - 36</i>)</p> <p>To receive an update from Joan Davis, Head of Library Services on the results of the Library Review and its impact on Westbury library.</p>	10 mins
12.	<p>Proposed Changes to Public Transport (<i>Pages 37 - 56</i>)</p> <p>To receive a presentation and question and answer session from Ian White Passenger Transport Communication Manager on the proposed changes to public transport and how they will impact on Westbury and surrounding villages.</p>	15 mins
13.	<p>Issues Updates</p> <p>To receive updates from the recent B3098 meeting, Community Area Transport Group (CATG) meeting, actions on the B3097 traffic issues, and updates on issues reported to the Area Board.</p>	5 mins
14.	<p>Leigh Park Adoptions Progress Report (<i>Pages 57 - 66</i>)</p> <p>To receive a progress report on Leigh Park adoptions from Steve Ibbetson, Technical Manager, Department for Neighbourhood and Planning.</p>	10 mins
15.	<p>Community Area Grants (<i>Pages 67 - 70</i>)</p> <p>a) To consider a Councillor Led Grant in respect of CAYPIG.</p>	5 mins
16.	<p>Future Meeting Dates, Forward Plan, and Close</p> <p>The next meeting Westbury Area Board meeting will take place on 16 June at Heywood Village Hall.</p> <p>There will be an additional meeting to discuss Big Society, localism and what it means for the Westbury area on 12 April at 6pm, The Laverton, Bratton Road, Westbury.</p>	

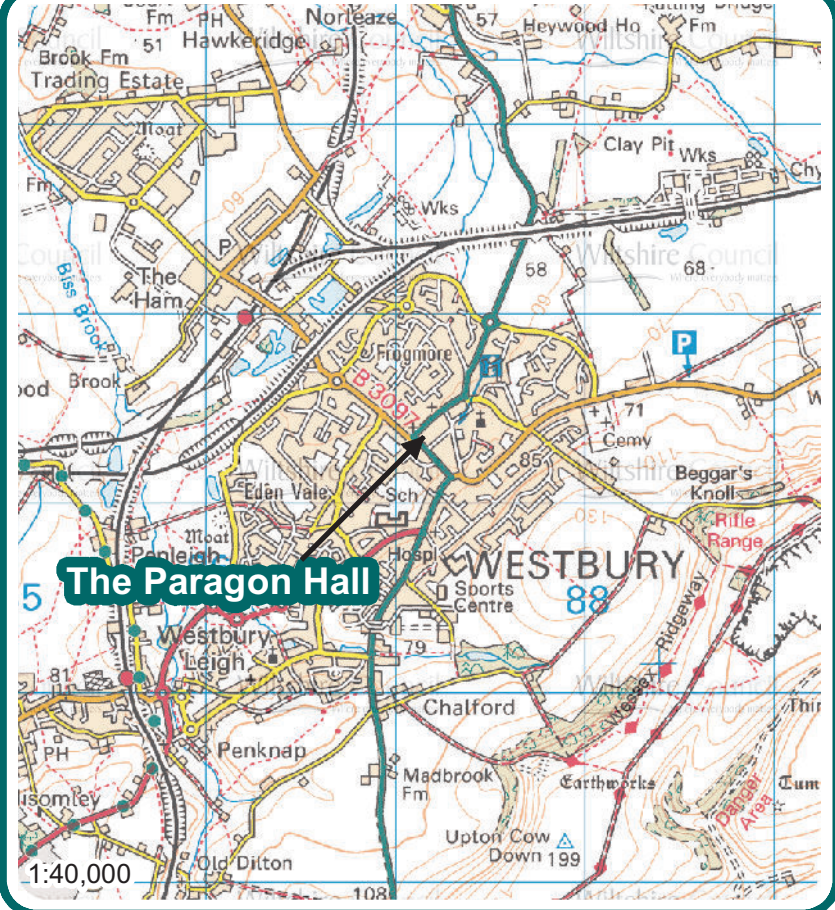
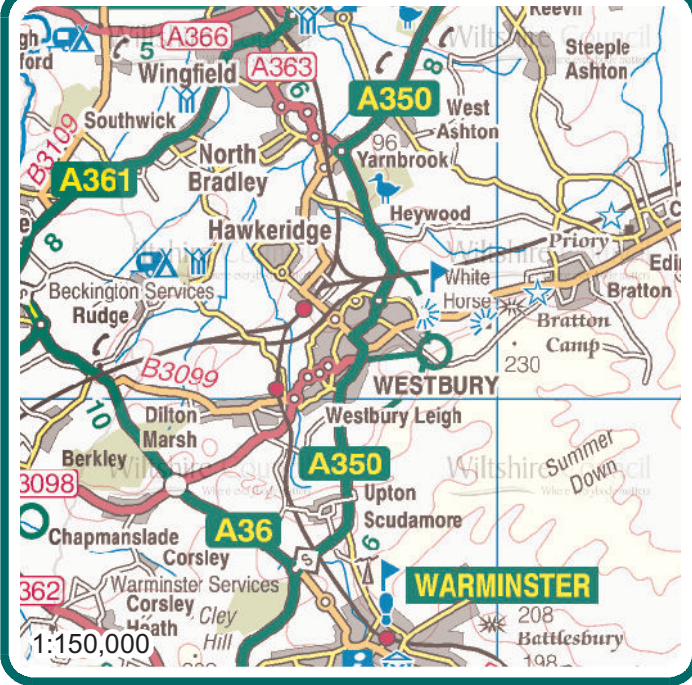
Future Meeting Dates

Thursday 16 June 2011
Heywood Village Hall, Heywood BA13 4LP

Thursday 11 August 2011
The Laverton, Westbury BA13 3EN

Thursday 6 October 2011
The Jubilee Hall, Bratton BA13 4RW

Thursday 8 December 2011
The Laverton, Westbury BA13 3EN



The Paragon Hall
Haynes Road
Westbury
BA13 3HA

Wiltshire Council
 Where everybody matters



Westbury Area Board 7 April 2011

Chairman's Announcements

End of Life: Dying Matters – awareness week 16-20 May 2011

There's one thing we can all guarantee in life and that is one day we will die. We choose how we live and how we have our children, but often don't get around to discussing our future plans. Death remains a taboo subject, something we're all afraid or unwilling to talk about.

NHS Wiltshire, Wiltshire Council and local hospices are joining in with national events planned for 'Dying Matters' week 16-20 May. The aim being to raise awareness of how we can talk about planning for our future care and putting plans in place with our families

Ask most people how they would like to die and most would say 'at home, or a hospice, and surrounded by the people that I love.' But fewer than half of us achieve that aim.

Planning for your future not only ensures your wishes will be respected but that your family and loved ones are taken care of and supported at a very difficult time.

You can also really support your family by writing a will; planning your funeral and putting into place a power of attorney for someone to look after your affairs should you become incapable.

Look out for Dying Matters events this May in your local area. There is also very good advice at www.dyingmatters.org.uk

A leaflet talking about planning for care at the end of your life is available at http://www.nhs.uk/Livewell/Endoflifecare/Documents/Planning_your_future_care%5B1%5D.pdf or for a hard copy please contact Alison Bell at NHS Wiltshire 01380 736 044

Where to get more advice?

For useful information on funeral options and writing wills go to <http://www.direct.gov.uk/en/Governmentcitizensandrights/Death/index.htm>

For more information on granting power of attorney go to <http://www.thecarer.co.uk/LastingPowerOfAttorney.html>

A guide on how to set out your preferred priorities for care can be found here http://www.endoflifecareforadults.nhs.uk/assets/downloads/ppc_1.pdf

For more information on organ donation go to <http://www.uktransplant.org.uk/ukt/default.jsp>

Westbury Area Board 7 April 2011

Chairman's Announcements

Localism Bill - Proposed Changes to Arrangements Governing the Conduct of Councillors

The Government's Localism Bill, published on 13 December 2010, makes significant changes to the current arrangements governing the conduct of councillors in Wiltshire. The proposals in the Bill include:

- removing the requirement for councils to adopt a national code of conduct for councillors;
- abolishing Standards for England, the national body responsible for overseeing the current standards regime in England;
- introducing new arrangements for the registration and declaration of personal interests, backed by the criminal law;
- giving councils a duty to promote and maintain high standards of conduct by councillors;
- enabling councils to adopt a voluntary code of conduct.

Councils, including unitary, town, parish and city councils will be expected to establish a committee to oversee the council's arrangements for promoting and maintaining high standards of conduct.

We will be monitoring the Localism Bill as it proceeds through Parliament. The Bill is expected to become law in the Autumn 2011. Further details on the arrangements will be provided in regulations.

In the meantime the current arrangements for standards, including the local assessment, consideration and determination of complaints under the model code of conduct adopted by councils, will continue to apply. We anticipate that the new arrangements will not come into effect until the Spring 2012.

We will be providing updates on the progress of this legislation to towns, parish and city councils.

If you need any further information on this matter please contact:

Ian Gibbons, Solicitor to the Council and Monitoring Officer
01225 713052 E-mail ian.gibbons@wiltshire.gov.uk; or

Nina Wilton, Head of Governance and Deputy Monitoring Officer
01225 713078 E-mail nina.wilton@wiltshire.gov.uk

MINUTES

Meeting: WESTBURY AREA BOARD
Place: Bratton, Jubilee Hall, Melbourne Street, Bratton, Westbury BA13 4RW
Date: 3 February 2011
Start Time: 7.00 pm
Finish Time: 9.25 pm

Please direct any enquiries on these minutes to:

Anna Thurman (Democratic Services Officer), Tel: 01225 718379 or (e-mail)
anna.thurman@wiltshire.gov.uk

Papers available on the Council's website at www.wiltshire.gov.uk

In Attendance:

Wiltshire Councillors

Cllr David Jenkins (Chairman), Cllr Julie Swabey (Vice Chairman) and
Cllr Russell Hawker

Cllr Lionel Grundy OBE - (Cabinet Member for Children's Services)

Wiltshire Council Officers

Sally Hendry - Westbury Community Area Manager

Julia Cramp - Service Director for Commissioning and Performance, Department for
Children and Education

Anna Thurman - Democratic Services Officer

Bill Parks - Divisional Highways Manager

Vincent Albano - Climate Change Project Manager

Sally Willox - Youth Development Officer

Town and Parish Councillors

Westbury Town Council - B Braid, S Ezra, C Mitchell, K Harvey, S Andrews, F
Morland

Bratton Parish Council - K Davis, R Pearce, K Drewett, K Miller, J Snooks, A Whittle,

Page 1 of 15

Edington Parish Council - ME Jones
Heywood Parish Council - P Sexstone, K Youngs, F Brine

Partners

BA13+ Community Area Partnership - Reverend Jonathan Burke
Wiltshire Police Authority - Cllr Ricky Rogers

Members of Public in Attendance: 51

Total in attendance: 81

<u>Agenda Item No.</u>	<u>Summary of Issues Discussed and Decision</u>	<u>Action By</u>
1.	<p><u>Chairman's Welcome, Introductions</u></p> <p>The Chairman welcomed everyone to the meeting of the Westbury Area Board being held in such a wonderful venue and thanked CAYPIG for their delicious smoothies. He went on to explain that agenda item 9 – Highways Issues and the B3098 would not take place due to Dave Bullock being unwell. This agenda item would take place at a special separate meeting later in March, date and venue to be confirmed.</p>	
2.	<p><u>Apologies for Absence</u></p> <p>Apologies for absence were received from Cllr Mike Cuthbert-Murray, Dai Davies from Cross point and Carole King from Community Area Partnership, Dr Peter Biggs, Michelle Slade and Dave Bullock Head of Service Traffic & Network Manager.</p>	
3.	<p><u>Declarations of Interest</u></p> <p>Councillors David Jenkins and Russell Hawker declared a prejudicial interest in Items 15a (1) A Community Area Grant application from Westbury Town Council and 15b Performance Reward Grant application from the Laverton Institute Trust) as they were all dual-hatted members of Westbury Town Council and Wiltshire Council. However, they had all been granted dispensations by the Standards Committee which enabled them to speak and vote on the matter.</p>	
4.	<p><u>Chairman's Announcements</u></p> <p>The Chairman made the following announcements:</p> <p>a) Street Trading</p> <p>Currently there is not a harmonised street trading policy for the Wiltshire Council area.</p> <p>The Licensing Committee agreed to introduce a new harmonised consent street trading scheme across the Wiltshire Council area. This will provide a flexible means of controlling street trading activity and allow greater scope for local involvement in decision making through a thorough consultation process for all applications for Street Trading Consents.</p> <p>An executive summary of the proposed scheme is available in</p>	

the agenda and a full copy of the proposed scheme and consultation survey is available on the Wiltshire Council website. All interested parties should return **written responses** to the Wiltshire Council Licensing Team **by 17 March**.

If members of the public or interested groups would like to complete the survey form, the survey is available on the Wiltshire Council website at <http://www.wiltshire.gov.uk/council/consultations.htm>.

b) Public Protection Enforcement Policy

The Public Protection Service is reviewing its enforcement policy, and is seeking views from interested stakeholders.

The policy deals with the entire range of legislation administered by the Public Protection Service covering all environmental health and trading standards powers, as well as any relevant community safety and emergency planning laws. The draft enforcement policy is on the council's website. <http://www.wiltshire.gov.uk/environmentandplanning/publicprotection/publicprotectionenforcementpolicy.htm>

c) Fairtrade

Fairtrade is based on the idea that small producers in the developing world should be paid a price for their produce that covers the cost of production and gives the family a living wage. The producer makes a long term agreement in advance with the Fairtrade purchasing company that ensures a guaranteed minimum price.

The Fairtrade mark on products is a guarantee that adherence to the agreement is being monitored. It has been in existence for 16 years and is now widely recognised though not necessarily widely understood.

The success of the Fairtrade movement so far is due in large part to the efforts of small local groups with the support of larger organisations. There are nine towns in Wiltshire which have achieved the status of Fairtrade town awarded by the Fairtrade Foundation.

The Wiltshire Fairtrade Coalition is an association of local Fairtrade town groups, businesses, other organisations and individuals working to promote understanding and uptake of Fairtrade produce. The coalition offers mutual support and

encouragement to members and aims to make Wiltshire a Fairtrade county.

d) Childcare Sufficiency Statement

Local authorities have a duty, under the Childcare Act 2006, to assess the sufficiency of childcare in their area and produce a report. Wiltshire's second report has now been drafted and it is out for consultation on the Wiltshire Council website:

<http://www.wiltshire.gov.uk/schoolseducationandlearning/earlyyearsandchildcare/childcaresufficiencyassessment.htm>.

Any comments should be forwarded to the early year's team using the response sheet provided on the website by **20 March 2011**. The final report will be published on the website before 1 April 2011.

Further information is available from earlyyears@wiltshire.gov.uk

e) Outcome of Leisure Review

Wiltshire Council's Cabinet has considered the results of the extensive consultation exercise undertaken between July and October and approved a refined proposal which shall;

- Retain a strategic view and ensure that the indoor leisure facilities are a key component of the emerging community campus programme.
- Ensure that the indoor leisure facility service in Wiltshire will be enhanced which creates more opportunities for local people to actively pursue a healthy lifestyle.
- Give a clear message about the Council's commitment to providing high quality and efficient local services.
- Deliver a refined proposal that has been directly shaped by local people.

The Council has been clear about its proposals to transfer some of the local facilities to the community to manage. The Council will now consider the proposal to transfer these facilities in a wider strategic context to enable it to assess the impact of a potential transfer alongside other council buildings and services. This will enable the Council to consider the practicalities and options for wider campus developments.

	<p>The Council's approach is intended to retain community involvement in the campus development project as it is recognised that local input is critical to success.</p> <p>This refined proposal for leisure acts as a pre-cursor to a report that the Workplace Transformation Team will present to Cabinet on 15th February 2011 that sets out the high level principles behind a sustainable and affordable campus development project.</p> <p>Assuming the Council approves the proposed way forward, the Council will continue to work closely with Area board and this will provide the method whereby interested local people and organisations will be able to get directly involved. The Council is keen to continue the on-going dialogue which has already been established with local community groups regarding the local management of services and the Workplace Transformation Team will attend the next Westbury Area Board meeting in April to discuss the proposals further.</p>	
5.	<p><u>Minutes</u></p> <p><u>Decision</u> The minutes of the previous meeting were agreed as a correct record and signed by the Chairman.</p>	
6.	<p><u>Partner Updates</u></p> <p>Wiltshire Fire and Rescue Update from Wiltshire Fire and Rescue was included in the agenda at pages 41 to 42.</p> <p>NHS Wiltshire Update from NHS Wiltshire for December and January were included in the agenda at pages 43 to 48.</p> <p>Edington Parish Council Cllr Michael Jones expressed his concern over the recent announcements regarding cuts to rural bus routes and asked for a report to be brought to the next Board detailing the cuts, if any, to Wiltshire's rural bus routes.</p> <p>Westbury Town Council Cllr Christine Mitchell reported that all the Christmas events went extremely well and were very popular. The next event will be a French Market to be held on 30 April 2011.</p> <p>Cllr Sue Ezra, reported on the work being undertaken on Vision for Westbury. Westbury Town Council is working with Wiltshire</p>	<p>Sally Hendry/ Cllr Julie Swabey</p>

	<p>Council to prepare a new Vision and Scoping Study for Westbury which will inform planning policy and set out clear recommendations to address issues in the town.</p> <p>Following the Christmas Street Event Day to talk to residents they received 350 comments about how they felt about the town, in general it was felt that;</p> <ul style="list-style-type: none"> • It was a nice town • Shopping facilities should be improved • Leisure and community facilities should be improved • Roads and public transport should be improved <p>Westbury Chamber of Commerce</p> <p>The Chairman announced that the Chamber of Commerce, TransWilts Community Rail and Wiltshire Council were supporting the TransWilts rail proposal, a north-south rail service for a 6 train per day service in each direction operated by First Great Western serving the 8 stations between Salisbury and Swindon.</p> <p>He reminded people of the New Wiltshire Business Competition for further details on both visit the Wessex Chamber of Commerce website www.wessexchambers.org.uk</p> <p>BA13+ Community Area Partnership (CAP)</p> <p>Reverend Jonathan Burke Chairman of BA13+CAP updated the Area Board. The main focus of work for the CAP continues to be the Community Plan linked with Vision for Westbury, Restorative Justice and the young person's transport plan. The BA13+CAP has a funds of £12,000 grants can be allocated for up to £500 to non - profit making organisations.</p>	
7.	<p><u>Lionel Grundy OBE, Cabinet Member for Children's Services</u></p> <p>Lionel Grundy OBE, Councillor for Urchfont and The Cannings outlined his role as Cabinet member for Children's Services. His responsibility is to overview policy, provision and the operations of Children's Services. There are also 3 portfolio holders for schools, youth and skills and vulnerable children.</p> <p>Since the formation of the Unitary Council, Children's Services has been undertaking a rigorous programme of restructuring, targeting services such as youth development and children's rights. Since the election there has been a significant re-focus of activities, an</p>	

	<p>example is the formation of academies. From the 1 April the Council faces a 28% cut in grants – this will dramatically affect the way business is conducted. The budget will be decided at the Cabinet meeting on 15 February.</p> <p>Cllr Grundy responding to a question from the public reassured those present that Children’s Services were liaising closely with Leisure Review and Work Place Transformation teams in order to ensure that children’s needs were catered for.</p>	
8.	<p><u>Community and Young People's Issue Group (CAYPIG)</u></p> <p>Sally Willox, Youth Development Co-ordinator/Team Leader updated the Board on a number of projects that CAYPIG were currently involved in.</p> <p>To date approximately 796 different young people aged from 12-19 have used the facilities since 1 April 2010. 88 young people have achieved accreditations with 43 further qualifications nearing completion by April 2011.</p> <p>Smoothy Bar Project This project has generated a lot of interest within the group, designing recipes and making Smoothy’s at the Centre and developing plans to develop their project by serving at community events. The members involved are completing their ASDAN Activities Award and Enterprise Award with the ultimate aim to establish a smoothy/milkshake bar in the town.</p> <p>Leisure Credits This involves young people carrying out voluntary work within the community and in return being given credits that would be exchanged for activities and trips such as ice-skating, cinema and bowling. The scheme is launching in February half term by means of a programme of work at the Youth Development Centre. It will provide experience, new skills, develop interest and improve their employability for the future, as well as rewarding them with an accredited award through the Duke of Edinburgh Award Scheme.</p> <p>Young People’s Transport Scheme This scheme is due to commence in February half term and will be begin with a structured sports development project. The pilot will run for 6 months.</p> <p>Wiltshire Youth Centres Football League A football league has been developed to enable youth centres’ to play against each other on a regular basis.</p>	

9.	<p><u>Highways Issues and the B3098</u></p> <p>Due to illness Dave Bullock, Transport and Network Manager, was unable to attend. It was decided that as this was such an important issue it would be addressed at a special individual meeting in March.</p> <p>Steve Lloyd, Coordinator of the Bratton Community Speed Watch updated the Board on their activities. There are currently 6 volunteers working in teams of 3. The speed gun is shared between Edington and Heywood. A note is made of vehicles exceeding the limit and is passed to the Police, who then may take the matter further. Their main priority is to reduce the speed of vehicles through the village centre, however other areas are also targeted.</p>	
10.	<p><u>Solar Farm Proposals</u></p> <p>Lindsay Holdoway and Chris Wordsworth of HPH Ltd gave a comprehensive presentation for a proposed solar panel farm at Mill Lane, Hawkeridge. The presentation included artist's impressions of its place in the landscape as viewed from Westbury White Horse and from the roadside together with photographs of similar developments elsewhere. The site is 15 hectares dissected in the middle by Mill Lane and adjacent to the Hawkeridge primary substation. HPH Ltd intend to mask the site from view by allowing the natural hedges to grow up to 3 metres in height and field maples will be planted to obscure the view. Grass maintenance between the panels will be undertaken by grazing sheep. The timetable associated with this is;</p> <ul style="list-style-type: none"> • Public consultation Jan – Feb 2011 • Planning application submission – Feb 2011-02-07 • If consent granted <ul style="list-style-type: none"> ▪ Installation works start Oct/Nov 2011-02-07 ▪ Generation 2012 <p>The change of use from a field to a solar panel farm proved to be an emotive subject, with local residents of Mill Lane expressing their concerns over the potential erection of the farm. Local parishes expressed a range of concerns that 'everybody' should have the ability to share their views and have their say. Cllr Julia Swabey, local member representing Heywood Parish invited residents to contact her and that she would ensure that concerns were dealt with appropriately and fairly.</p>	
11.	<p><u>Wiltshire Police Authority</u></p> <p>Councillor Ricky Rogers representing Wiltshire Police Authority</p>	

	<p>gave a presentation on the Police budgets cuts in spending. The Police budget needs to make £15 million in savings over the next 4 years, the result of this is that the Force is likely to have 150 fewer officers and 200 fewer staff. The main priorities are;</p> <ul style="list-style-type: none"> • Keeping the public safe on the streets and at home • Keeping neighbourhood police officers and PCSOs at the current levels. • Responding promptly to emergency 999 calls • Maintaining an acceptable standard for call handling to deal with general enquiries and non urgent calls. <p>Through the changes, the aim is to save money and provide a more flexible police service across the whole county. It is intended to keep the 11 policing sectors as they are because this way of working mirrors the way other agencies deliver their services. Neighbourhood Policing Teams will continue to be aligned to local authority community area boards or cluster areas in Swindon, so that they can work effectively with other agencies to address community issues. Response policing teams will primarily operate from Swindon, Melksham and Salisbury where the custody centres are based. The specialist policing services (police dogs, roads policing) will remain, while crime investigators, including CID, will work locally alongside response police officers. The Swindon and County divisional structures will be merged, so removing a tier of management and administration.</p> <p>In the proposed new structure Wiltshire Police will have the flexibility to deploy any officer to where they are most needed.</p> <p>For further information www.wiltshire.pa.gov.uk</p>	
12.	<p><u>Crosspoint</u></p> <p>Reverends Jennifer Totney and Jonathan Burke outlined the background and progress on plans for a drop in centre in Westbury.</p> <p>The first project is to open a Welcome Centre where people can see a friendly face, be listened to and helped if necessary. It is recognised that people may not know where to go to get help and advice and may not initially feel comfortable with statutory agencies. The intention is to help to empower people, not create dependency. The drop in centre will be open to all 3 to 4 mornings</p>	

	<p>a week or half days for coffee/tea, chat in a non–threatening, supportive and friendly environment.</p> <p>The need for this facility has been researched and £6000 towards this project has already been raised. Currently the project is negotiating premises in the town, raising public awareness and engaging with various agencies.</p> <p>For further information and an opportunity to volunteer or contribute visit www.crosspoint/westbury.co.uk</p>	
13.	<p><u>Community Policing Update</u></p> <p>The Chairman informed the Board that Inspector Dave Minty was unable to attend this evening due to immediate operational commitments, but had provided a report. A shortened version is detailed below.</p> <p>Over the last three months performance has fluctuated. The aim is to make Wiltshire the safest County in the Country and it is pleasing that violent crime has reduced by 25% on the same period last year. Dwelling burglaries are also down, by 23.3%, which equates to 10 less victims than last year.</p> <p>Currently there is an increase in non-dwelling burglaries, these are mostly shed breaks. 4 individuals have been arrested and are currently on police bail whilst investigations take place. Anyone with information should inform the police.</p> <p>Following the last Area Board, there has been a concerted effort to increase the number of visible foot patrols undertaken by staff in the town. It is a priority.</p> <p>www.wiltshirepolice.uk</p>	
14.	<p><u>Issues Updates</u></p> <p>Sally Hendry, Community Area Manager, updated the Board on the issues, wide and varied, that are concerning the community area.</p> <p>White Horse – The White Horse was painted by English Heritage 3.5 years ago at a cost of approximately £23K. English Heritage report that it is scheduled to be re-painted every 10 years. There is no scope for volunteers to paint it as there are significant health and safety implications.</p> <p>Speed Checks – There are a number of metro counts being</p>	

	<p>undertaken around the community area at the moment.</p> <p>Grot Spots – As a part of Community Payback/Wiltshire probation service are undertaking a clear up, cut back and litter pick of Wellhead woods.</p> <p>Heywood Traffic – There have been meetings with the Parish Council and Tumblewood School. Warning signage will be erected in the following two weeks.</p> <p>Westbury Library - Westbury has favoured relatively well in the review, having to cut back its hours by 5.5 hours a week. Volunteers are welcome.</p> <p>Neil Tribick from Westbury Leisure Alliance (WLA) updated the Board on the current situation of Westbury’s leisure facilities. All Councillors were written to, many of whom claim not to have received the e-mail asking that Westbury Leisure facilities remain under Council control. The Leisure review now falls under the remit of the Work Place Transformation Team and it now comes under the Estate Review rather than Leisure. The Alliance is still chasing Councillor Wheeler for a response to the initial e-mail from the Alliance but to date he has not responded.</p> <p>The Chairman suspected that information would be limited until the outcome of the next Cabinet meeting on 15 February where the financial position of the Council would be discussed.</p>	<p>Sally Hendry/ Cllr Julie Swabey</p>
<p>15.</p>	<p><u>Community Area Grants</u></p> <p>a) Councillors considered 5 applications for Community Area Grants.</p> <p>1. An application has been received from Westbury Town Council – award £545 to match fund the purchase of a mobile projector, screen and whiteboard for community use.</p> <p>Decision</p> <p>Westbury Area Board awarded the sum of £545 to Westbury Town Council.</p> <p>Reason</p> <p><i>The application met the Community Area Grants criteria 2010/11 and linked to Wiltshire Council’s priorities of Westbury area community plan (Improving</i></p>	<p>Sally Hendry</p>

	<p>economy/tourism P.9).</p> <p>2. An application has been received from Edington Parish Hall – award £3250 to match fund replacement windows in the village hall.</p> <p>Decision</p> <p>Westbury Area Board awarded the sum of £3250 to Edington Parish Hall.</p> <p>Reason</p> <p><i>The application met the Community Area Grants criteria 2010/11 and linked to Wiltshire Council's priorities of engaging with local people; increasing numbers involved in volunteering, and with the aims of the Westbury area community plan (Improving leisure/recreation P.27).</i></p> <p>3. An application has been received from the Dilton Marsh Flower and Produce show – award £320 to fund publicity and set up costs for a village flower and handicrafts show.</p> <p>Decision</p> <p>Westbury Area Board awarded the sum of £320 to Dilton Marsh Flower and Produce show.</p> <p>Reason</p> <p><i>The application met the Community Area Grants criteria 2010/11 and linked to Wiltshire Council's priorities of engaging with local people and increasing numbers involved in volunteering and with the aims of the Westbury area community plan (Improving leisure/recreation P.27).</i></p> <p>It should be noted that should the show become an annual event, there could not be repeat funding available from the area board.</p> <p>4. An application has been received by Coulston Parish Council - award £105 to match fund the connection of water to village allotments.</p>	<p>Sally Hendry</p> <p>Sally Hendry</p>
--	--	---

	<p>2) An application has been received from the new Wiltshire Infrastructure Support Service – ‘GROW’ <i>Enhancing Community Support</i> includes a countywide Volunteer Service for Wiltshire for the first time. This application, if approved, would both build on the basic service and develop an accredited volunteer centre for Wiltshire. At present the nearest accredited centre is in Swindon. The proposed service would offer the six core functions of a Volunteer Centre as prescribed by Volunteering England. The benefits to all community areas in Wiltshire will include better access to volunteering opportunities and support to individuals, Employer Volunteering scheme, specialised support, information and good practice services, access to draw down further funding via Volunteering England to support volunteering, and access to support and information as part of a national framework.</p> <p>Decision</p> <p>Westbury Area Board supported the Performance Reward Grant application from The Laverton Trust.</p>	<p>Sally Hendry</p>
<p>16.</p>	<p><u>Any Other Business</u></p> <p>There were no items.</p>	
<p>17.</p>	<p><u>Future date, Forward Plan and Close</u></p> <p>The forward plan was noted.</p> <p>The next meeting of Westbury Area Board will take place on the 7 April at The Paragon Hall, Westbury, 7.00pm.</p>	



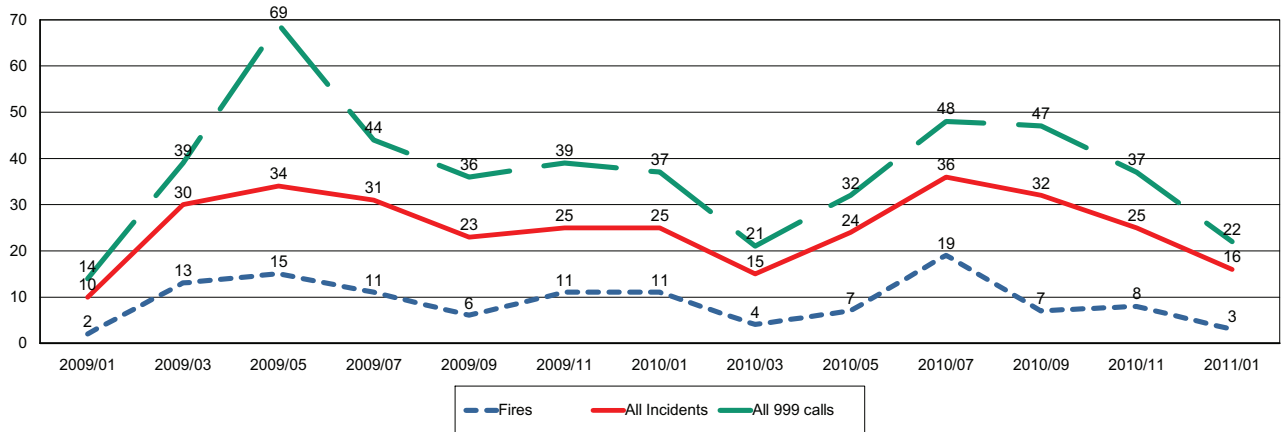
Wiltshire Fire & Rescue Service

Wiltshire and Swindon Fire Authority

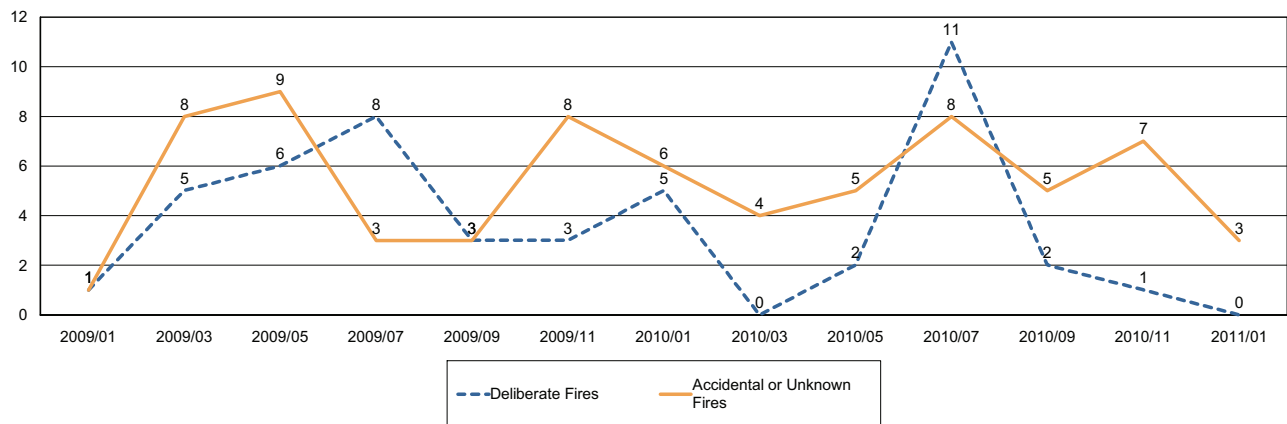
Report for Westbury Area Board

The following is a bi-monthly update of Fire and Rescue Service activity up to and including January 2011. It has been prepared by the Group Manager for the Board's area.

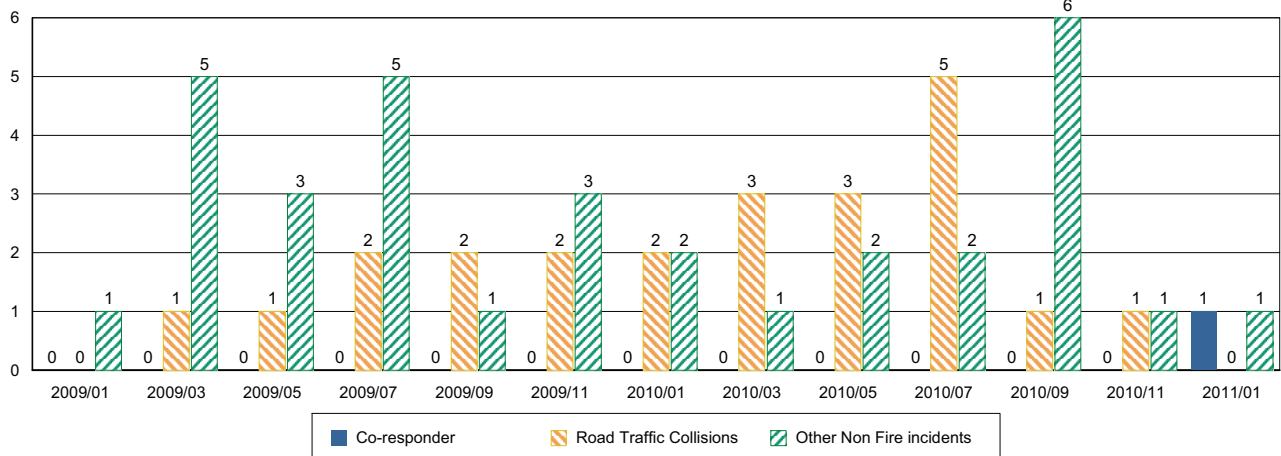
Incidents and Calls



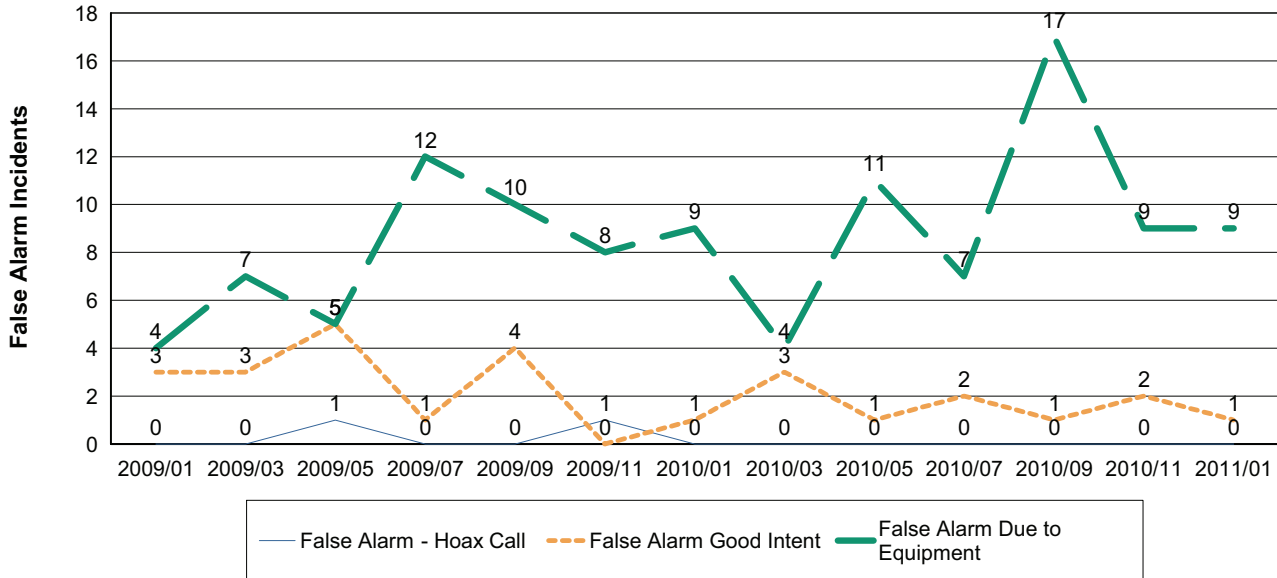
Fires by Cause



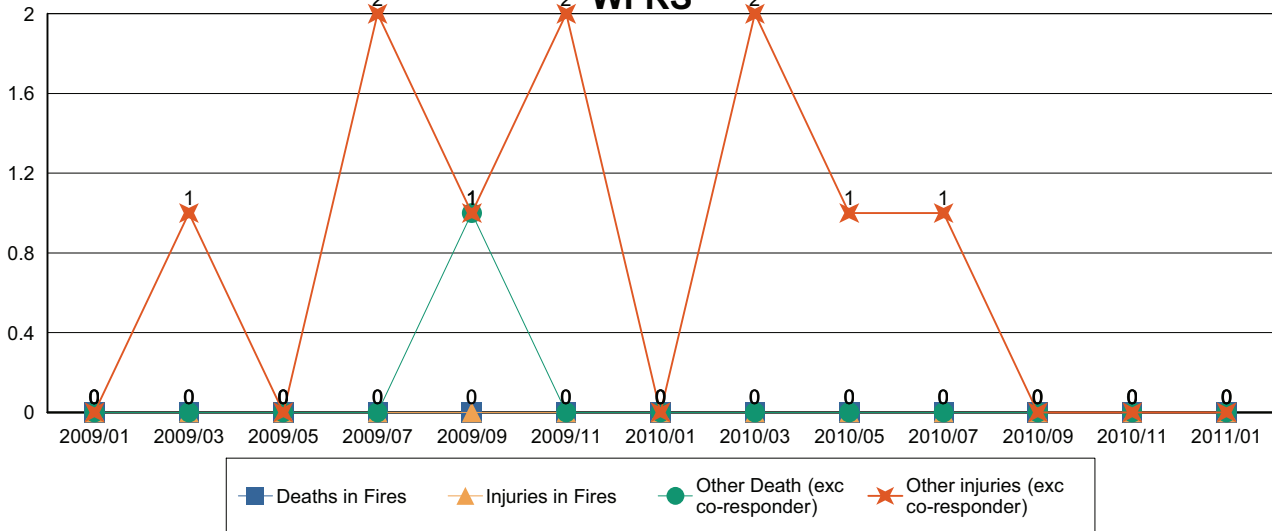
Non-Fire incidents attended by WFRS



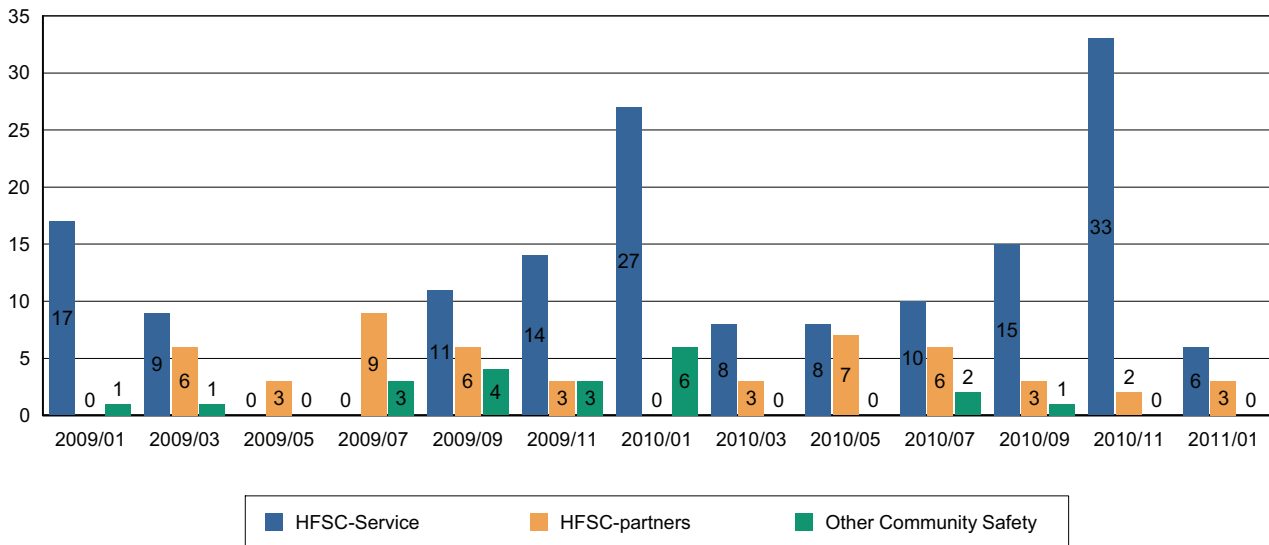
Number of False Alarm Incidents



Death & Injuries in incidents attended by WFRS



Home Fire Safety Checks and other domestic safety



Comments and Interventions overleaf



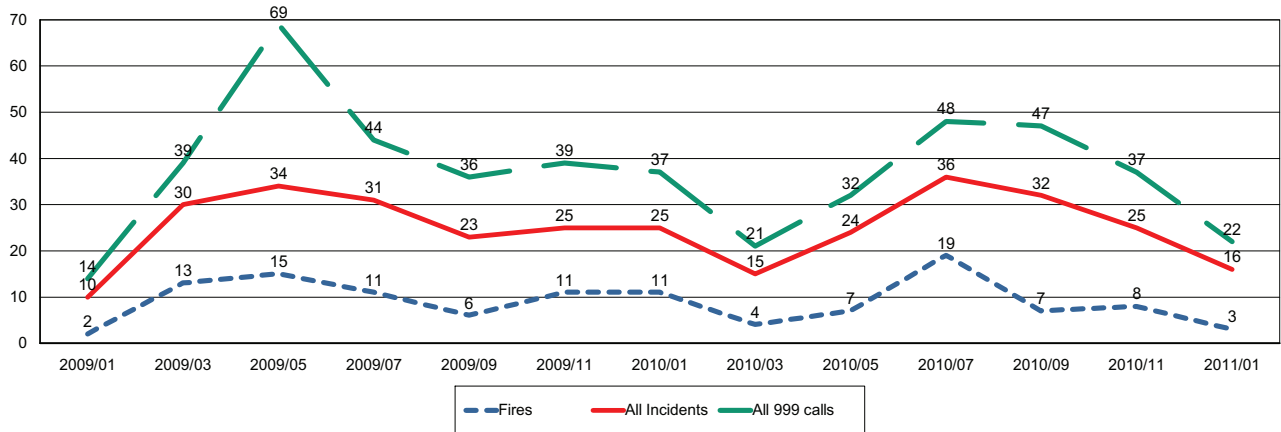
Wiltshire Fire & Rescue Service

Wiltshire and Swindon Fire Authority

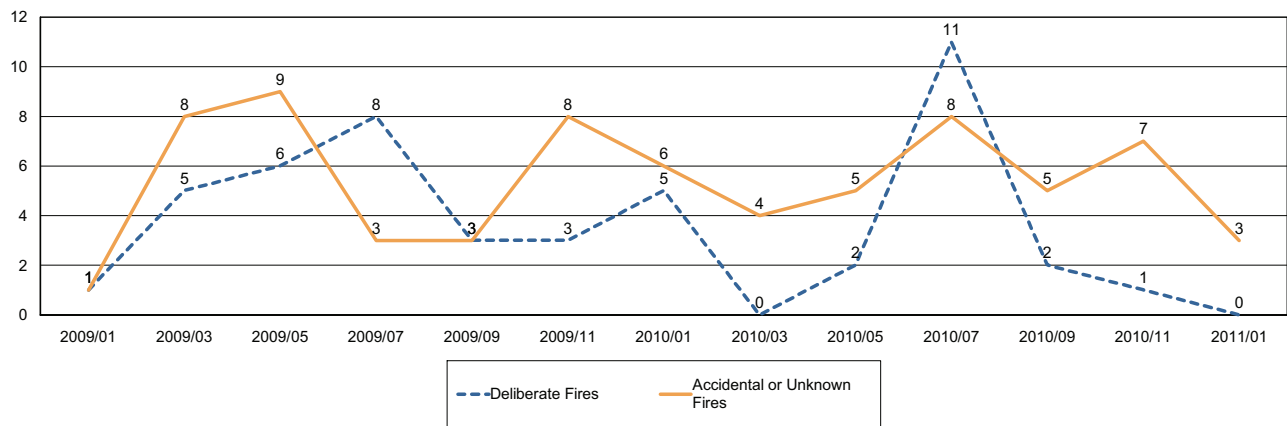
Report for Westbury Area Board

The following is a bi-monthly update of Fire and Rescue Service activity up to and including January 2011. It has been prepared by the Group Manager for the Board's area.

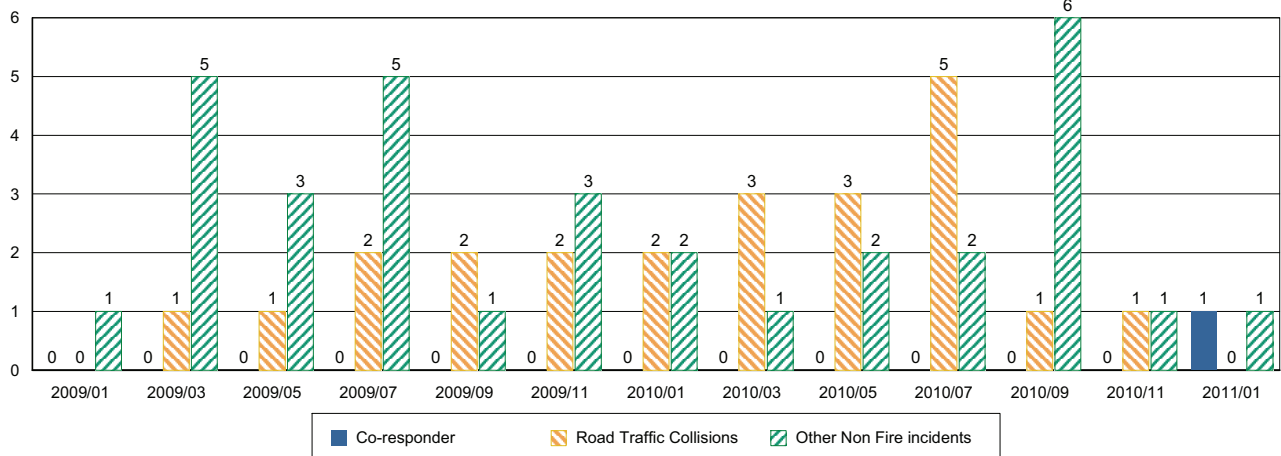
Incidents and Calls



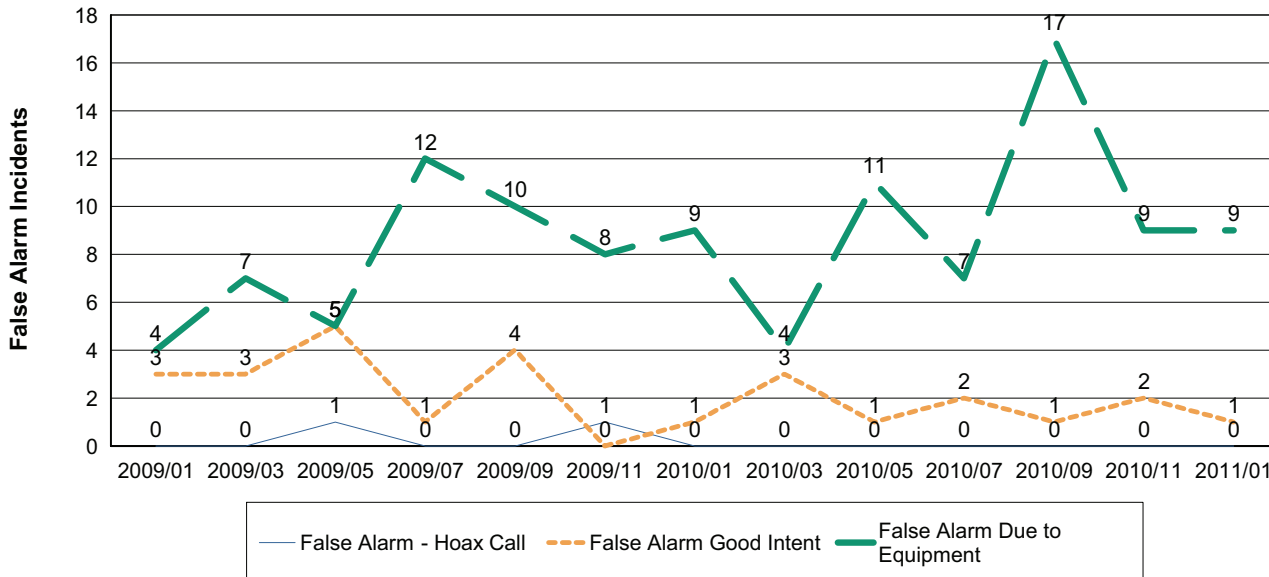
Fires by Cause



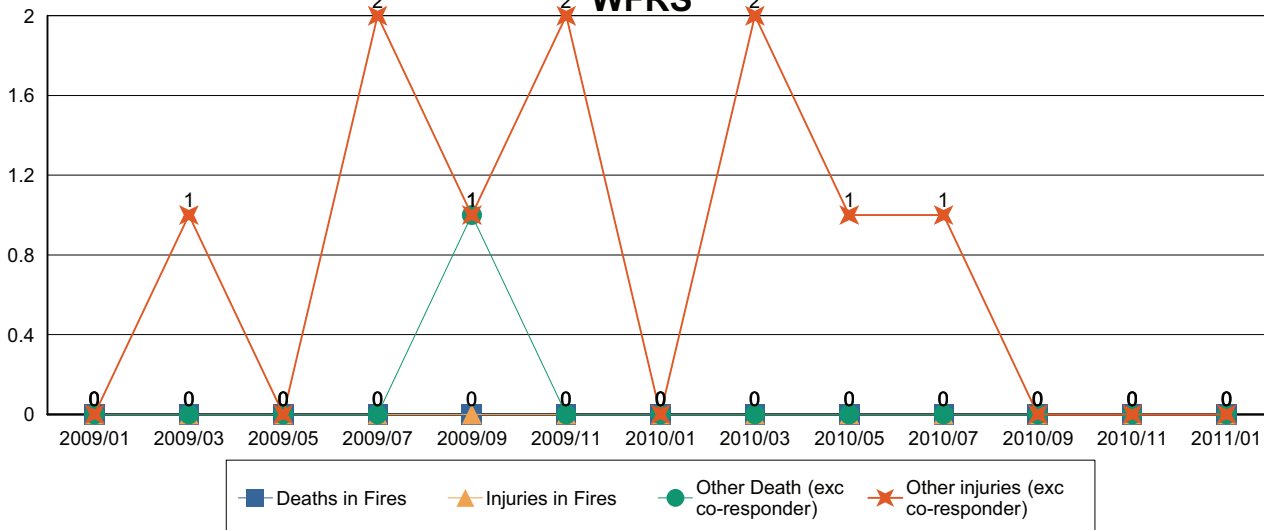
Non-Fire incidents attended by WFRS



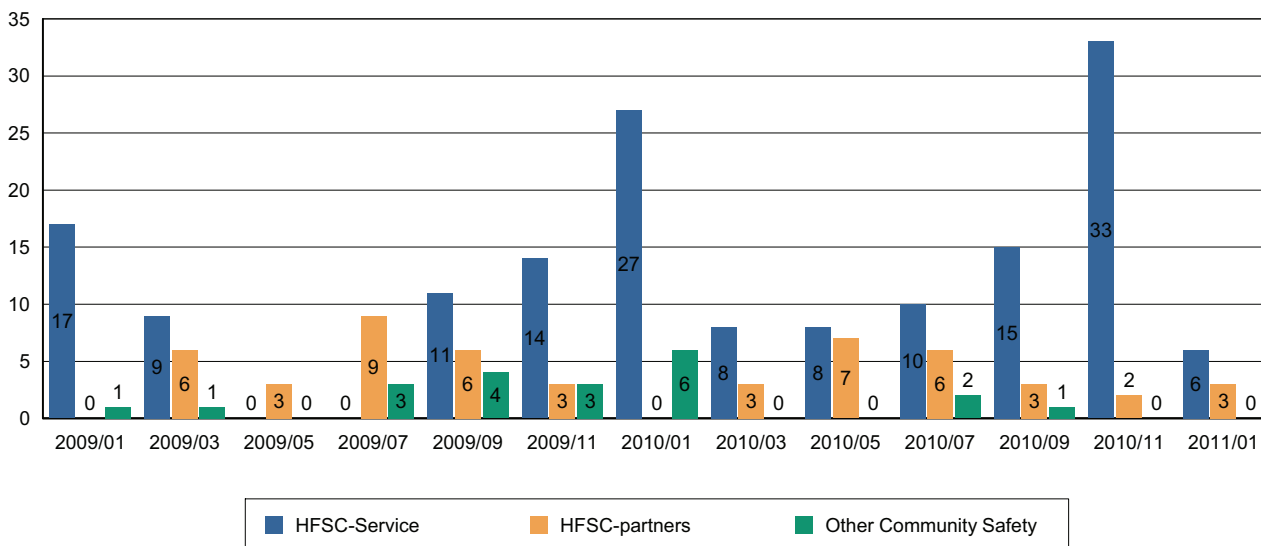
Number of False Alarm Incidents



Death & Injuries in incidents attended by WFRS



Home Fire Safety Checks and other domestic safety



Comments and Interventions overleaf

NHS Update – February 2011

Health and Social Care Bill sets out way forward for the NHS

Plans to put patients at the heart of the NHS have been set out in the Health and Social Care Bill 2011, published by the Government in January.

The proposed changes are intended to deliver better care, more choice and improved outcomes for patients, as well as long term financial savings for the NHS.

The Bill includes proposals to:

- Bring commissioning closer to patients by giving responsibility to GP-led groups
- Increase accountability for patients and the public by establishing HealthWatch and local wellbeing boards within local councils
- Enable all trusts to become foundation trusts and establish independent regulation of them
- Improve public health by creating Public Health England
- Reduce bureaucracy by streamlining arm's-length bodies

The changes should save more than £5 billion by 2014/15, and £1.7 billion a year after that, by changing the way the NHS delivers care, abolishing Strategic Health Authorities and Primary Care Trusts, and removing some 24,500 management posts.

For more information see: www.dh.gov.uk/healthandsocialcarebill

Five 'consortia' groups of Wiltshire GPs have made a successful application for 'Pathfinder' status.

As a big step towards delivering the plans set out in the Government's NHS White Paper Liberating the NHS: Equity and Excellence, the Pathfinder groups will test the new commissioning arrangements to ensure they are working well before more formal arrangements come into place. GPs will work with colleagues at NHS Wiltshire in shadow form to manage the budget for Wiltshire patients, purchasing services for patients direct with other NHS colleagues and local authorities. The Pathfinder status allows GPs to test out the new arrangements at an early stage before GP consortia take on statutory responsibilities from April 2013

New health facilities planned for Salisbury

Proposals for three new healthcare developments for Salisbury were unveiled at the last Salisbury Area Board. Representatives from NHS Wiltshire and three GP practices briefed local politicians and decision-makers on proposals, approved in outline by NHS Wiltshire late last year, for:

- New premises for the existing Castle Street practice on NHS owned land and for a new state-of-the-art GP practice on the site of Salisbury's Old Manor Hospital.
- Also on Wilton Road, refurbishment of the Groveley Unit, by NHS Wiltshire to accommodate services currently housed at the Central Clinic and at Salisbury Hospital.
- New Street Surgery's branch surgery at Bishopdown will not be affected by the changes and will continue to exist on its current site.

- Wiltshire to accommodate services currently housed at the Central Health Clinic and at Salisbury Hospital.

The new building on the site of the Old Manor Hospital will be paid for and developed by the GP practices, and designed to provide accessible, modern facilities for patients. For patients, the new developments will mean more comfortable, accessible premises, and access to the same doctors and other staff as before. In the case of Castle Street, the new premises will still be occupied by the same, single practice – and only a couple of minutes walk away from the existing surgery.

Patients of New Street and Grove House will find the new premises on the Old Manor site a welcome upgrade from the existing surgeries – fully accessible for patients with disabilities, with better car parking and access by bus. Otherwise, however, they will experience the same, personal service from the two practices.

You're Welcome at St Laurence School

St Laurence School in Bradford on Avon has celebrated achieving "You're Welcome" status and is the first school in Wiltshire to do so.

You're Welcome is a robust national audit supported by the NHS to ensure that the health services provided for young people are friendly, relevant, confidential and totally supportive.

St Laurence School, together with its extended services staff, are dedicated to supporting their students' health and wellbeing, enabling them to access help to support their emotional and mental well being, their relationships and sexual health as well as drug and alcohol issues when needed. Staff work closely with partners and are able to signpost to additional specialist support when required.

To achieve the You're Welcome award the school had to demonstrate how the staff have engaged with young people to help develop, monitor and evaluate the services offered. St Laurence has embraced this challenge, constantly consulting the pupils and proactively seeking their involvement to make decisions about aspects of the service, such as where the multi agency drop-in should be located and what sort of venue it should be.

The next Board meeting of NHS Wiltshire will be held on **Wednesday 16 March at 10am - 2011 at Southgate House**. Members of the public are welcome to attend.

Papers are published a week before the meeting on www.wiltshire.nhs.uk or on request from Stacey Saunders, NHS Wiltshire (tel: 01380 733839, email: stacey.saunders@wiltshire.nhs.uk). For further information or copies of documents referred to above, please contact Jo Howes, Community Engagement Manager, 01380 733929 or jo.howes@wiltshire.nhs

NHS Update – March 2011

South West has the highest proportion of people who smoke ‘roll-ups’

Smokefree South West launches a major campaign in Wiltshire in early March, targeting the 33% of smokers in the South West, the highest in the country, who use hand rolling tobacco. The first of its kind, it will highlight its inherent health risks and dispel the myths that have built up around it.

The campaign, which has been backed by Cancer Research UK and the Faculty of Public Health, will be seen across Wiltshire, including eye catching billboards, support packs for smokers looking to quit and hard-hitting radio and television adverts premiering today.

The cost of hospital admissions for users of hand rolling tobacco in the South West ran to approximately £31.7m in 2008/09, this represents an estimated £6 for every person in the South West.

Smokefree South West has developed a brand new Wise-Up to Roll-Ups pack, in the style of a hand rolling tobacco pouch, containing information about hand rolling tobacco and quitting tools to aid smokers to quit hand rolling tobacco. Smokers can order a pouch, by texting **WISE** to a unique text number, 0800 028 0553, or by going online to our dedicated website www.wiseupandquit.co.uk. Leaflets and posters will also be placed in GP surgeries across the South West.

New NHS Stop-Smoking drop-in clinic for Westbury

Westbury smokers wanting to take the first steps to freedom from the habit will have a new option on their doorstep, with the opening of NHS Wiltshire’s Saturday drop-in clinic at The Laverton in Bratton Road. The clinic has been set up in response to increasing demand for support to stop smoking, and will open on Saturday 26 February 2011, initially running for a 12-week pilot.

There is already an award-winning stop smoking clinic established in Westbury on Tuesday evenings which has proved a great success with people giving up and becoming smoke free. The Westbury clinic at the Hospital has attracted over 100 smokers since April 2010 with 65 per cent of those being smoke free four weeks after setting a quit date.

For information on how to get off the cigarettes, your local NHS Stop Smoking Service is the first place to call – phone 01380 733891. Alternatively people can visit <http://www.wiltshire.nhs.uk/> for more information to help them make this important move.

Chippenham Hospital CQC Inspection

In early February, the Care Quality Commission (CQC) which is the independent regulator of health and social care services in England, published a report following its visit to Chippenham Hospital in December 2010.

The visit was one of a programme of unannounced inspection visits to NHS facilities. Inspectors looked at the hospital environment, spoke to patients and staff on two wards and in the minor injuries unit, and reviewed a range of information.

The report identified that the Care Quality Commission has minor concerns about *some* aspects of the service on Beech Ward at Chippenham Hospital. It also found that new mothers praised staff on Chippenham Birthing Unit for their patient support with breastfeeding, and in the minor injuries unit staff were described as cheerful and welcoming.

Wiltshire Community Health Services (WCHS), which runs Chippenham Hospital, has welcomed the report, and acknowledged the areas where the CQC defined it has minor concerns. Responding, Annie Kelly, WCHS Director of Nursing with responsibility for the quality of patient care, said: "We take all the concerns seriously and are finalising a robust action plan, detailing how we can work with staff and others to ensure that we are providing the high quality care that people rightly expect."

Director of Public Health thanks health colleagues as flu numbers drop

This year's seasonal influenza virus appears to be on the decrease this month after a difficult winter. Maggie Rae, Director of Public Health for Wiltshire, praised staff for their dedication and commitment over the last few months.

"As the person with responsibility for the public health of the people of Wiltshire, I would like to give my thanks to the GPs, hospital doctors, nurses, pharmacists and NHS Wiltshire's Primary Care Team who have done a tremendous job this winter – as they do every winter – in keeping the local health service running effectively. All the health and social care staff have done an excellent job, and thanks to their efforts, along with appropriate self-treatment and use of services by local people, we have managed very well".

Influenza is still circulating in our communities, although at much lower levels than we saw over the Christmas period.

Next NHS Wiltshire Board Meeting

The next Board meeting of NHS Wiltshire will be held on **Wednesday 16 March at 10am - 2011 at Southgate House**. Members of the public are welcome to attend.

Papers are published a week before the meeting on www.wiltshire.nhs.uk or on request from Stacey Saunders, NHS Wiltshire (tel: 01380 733839, email: stacey.saunders@wiltshire.nhs.uk). For further information or copies of documents referred to above, please contact Jo Howes, Community Engagement Manager, 01380 733929 or jo.howes@wiltshire.nhs

NHS Update – April 2011

Management cost reductions

NHS Wiltshire has been successful in reducing the number of posts originally identified as being at risk of redundancy from 55 to 25. In addition, a further 19 people have already chosen to leave, or are due to leave NHS employment through an NHS resignation scheme. This means that a total reduction of 44 posts will have been made by 31 March 2011, covering a combination of management and administrative roles.

Health and Wellbeing Boards lead the way in the South West

Care Services Minister Paul Burstow unveiled that all local authorities in the South West have signed up to be early implementers of new cross-working boards. This means patients and the public can expect a more joined-up service from the NHS and local councils in the future as part of broader plans to modernise the NHS.

All 15 local authorities covering the South West have signed up to join a network of early implementers for health and wellbeing boards that will strip away divisions between the NHS and local authorities. This will give communities a greater say in the services needed to provide care for local people and to tackle the wider influencers of health such as transport, housing and leisure services.

Devizes Health Clinic

The decision to transfer services from Devizes Health Centre to Devizes Community Hospital was taken at NHS Wiltshire's Public Board Meeting in March 2010, as part of the PCT's long-standing plan for primary health care in Devizes.

Patients who use Devizes Health Clinic know that the building is in a certain state of disrepair; it therefore makes sense to dispose of the property so that we can keep and improve the ones that are sustainable to meet the needs of patients and staff. We plan to move the services from the Health Clinic to the hospital within the 2010/11 financial year and are currently planning the room configurations for services in the hospital so that services can be provided there from mid-April, located in the area which was previously used as the maternity wing.

All the services currently provided at the Health Clinic – the Health Visitor Service, the Emergency Dental Access service, podiatry, paediatric clinic and continence service - will move over to the hospital. There are no plans to begin marketing the Health Clinic site at any stage before the transfer of any service is complete. NHS Wiltshire will report any contract for the sale or lease of Devizes Health Clinic as a matter of public record in the usual way, which is through the Register of Sealings in its public Board Meetings.

GP Practice merger proposed

Plans for two Trowbridge GP practices - Bradford Road Medical Centre and Adcroft Surgery – to merge and co-locate in improved premises were announced at Trowbridge Area Board meeting on Thursday 17 March 2011.

The proposed GP-led Primary Care Development will provide flexible accommodation to enable GPs to provide a robust service with resources to deal with the future challenges of providing NHS care to patients.

Part of the development will be on land owned by NHS Wiltshire, which is currently used under licence by Trowbridge Cricket Club as a practice pitch. Outline planning permission was granted to the Primary Care Trust in February 2010 for the development of the land, and the area required for the Primary Care Development will now be sold to the GP practices in order for the new premises to be built.

The new building will consist of a two-story extension to the existing Adcroft Surgery premises, with additional car parking, an access road and a pharmacy building. Pedestrian access will also be possible from Adcroft Street through the Trowbridge Community Hospital site. The total premises size, including the existing Adcroft premises, will be approximately 1700 square meters. Car parking will be vastly improved, with a total of 108 spaces (30 existing, 78 new), and a new road from Seymour Road across the site will further improve access for patients.

Services offered at the development will include:

- A diagnostics 'pad', which will allow mobile units to provide breast screening and MRI screening
- An ambulance stand-by point in the car park
- An on-site pharmacy
- An on-site dental practice with an NHS dental contract

The development will be funded by the two practices, with an £87,500 annual investment from NHS Wiltshire.

Help for Adults with Eating Disorders in Wiltshire

NHS Wiltshire has commissioned a new Wiltshire service for Adults with Eating Disorders which will begin on 1st May 2011. The contract for the service, to be provided by Oxford Health NHS Foundation Trust, is for a period of three years.

Oxford Health NHS Foundation Trust has two specialist Eating Disorders Inpatient units – Cotswold House Oxford and Cotswold House Marlborough - the 12-bedded inpatient Unit based at Savernake Hospital. The new service will provide a full range of interventions, all based in Wiltshire so it is easier for patients to be treated closer to home. A website will offer guidance and advice for patients, carers and professionals and a multidisciplinary team will work with patients in the community. Those requiring treatment as day patients will be able to attend Cotswold House, Marlborough for one to seven days per week depending on their needs, which will help minimise disruption to employment, education or training. Inpatient treatment will be provided for the most unwell patients. The specialist unit based at Savernake Hospital has 12 en-suite bedrooms, day areas, a garden area and a suite of rooms for therapeutic activities. The inpatient team will working closely with community staff and inpatient teams will reduce emergency admissions to general hospitals. For patients with eating disorders who do require general hospital care for any reason, a specialist liaison service will be available.

Next NHS Wiltshire Board Meeting

The next Board meeting of NHS Wiltshire will be held on **Wednesday 18 May at 10am - 2011 at Southgate House**. Members of the public are welcome to attend. Papers are published a week before the meeting on www.wiltshire.nhs.uk or on request from Stacey Saunders, NHS Wiltshire (tel: 01380 733839, email: stacey.saunders@wiltshire.nhs.uk). For further information or copies of documents referred to above, please email communications@wiltshire.nhs.uk

Wiltshire's libraries – Plans for change

Wiltshire Council is facing a budget reduction of 28.4% over the coming years. To help the council meet this target, the library service will need to reduce its budget by a similar amount.

Following comprehensive consultation, which included area boards, customer focus groups, plans for how the library service will manage its reduced budget were approved by Wiltshire Council's Cabinet on 25 January 2011. The savings will be made by reducing the library stock fund by £149,000 per year to £707,000 per year, by rationalising library opening hours and by working with volunteers to operate our smallest libraries and to extend opening hours at other locations.

Key points from the plans:

- All 31 of Wiltshire's libraries will be retained
- All five of Wiltshire's mobile libraries will be retained
- All libraries will still receive funding from Wiltshire council for premises costs, power, cleaning and computer systems
- Library stock would continue to be provided to all library branches

The main changes are:

- Wiltshire's 21 largest libraries would see a reduction in their opening hours. See overleaf for detail
- Reductions would be more significant in libraries serving smaller communities
- Wiltshire's 10 smallest libraries, accounting for 3% of visits overall, would be operated in partnership with volunteers, supported by the library service
- Opening hours would be rationalised so similar sized communities would have the same library opening hours
- Self service technology would be introduced to all libraries to improve efficiency and help communities extend library opening hours through support from volunteers, who will be trained and supported by Wiltshire library staff

Wiltshire Council is fully committed to its libraries and understands how important they are to communities. These plans would allow the council to retain its current network of libraries and mobile library stops.

For more information on how local libraries would be affected see the table overleaf.

If you are interested in volunteering please register your interest on the back page of this leaflet.

Library name	Current opening hours	Proposed opening hours	Evenings (until 7pm)	Saturday
Salisbury	55	53	3	9am – 5pm
Chippenham	55	49	3	9am – 5pm
Trowbridge	52	49	3	9am – 5pm
Devizes	51	43	2	9.30am – 4pm
Warminster	46	43	2	9.30am – 4pm
Bradford on Avon	46	40	2	9.30am – 4pm
Calne	46	40	2	9.30am – 4pm
Melksham	42	40	2	9.30am – 4pm
Wootton Bassett	39.5	40	2	9.30am – 4pm
Amesbury	42	33	2	9.30am – 1pm
Corsham	39.5	33	2	9.30am – 1pm
Malmesbury	38.5	33	2	9.30am – 1pm
Marlborough	42.5	33	2	9.30am – 1pm
Westbury	38.5	33	2	9.30am – 1pm
Mere	45	31	1	10 - 1
Pewsey	24	17	1	10 - 1
Tidworth*	34	34	2	10 - 1
Cricklade	20	14	1	No
Downton	26	14	1	No
Wilton	30	14	1	No
Aldbourne	10	<p>Opening hours at these 10 smallest will be agreed with each Community and will depend upon the number of volunteers available (we aim for a minimum 3 hours opening per week)</p> <p>These library branches will have five hours of support each week from trained library staff, who will carry out essential back office tasks and train and support volunteers.</p>		
Box	12			
Durrington	19			
Ludgershall	19			
Lyneham	15			
Market Lavington	10			
Netheravon	10			
Purton	16			
Ramsbury	10			
Tisbury	13			

* Tidworth library operates under a management agreement with HM Armed Forces

Your views

The council has approved these plans to achieve the savings required over the next two years but welcomes your views on them for future service planning.

- Please complete the feedback form and return it to your local library or to Library HQ, Bythesea Road, Trowbridge, BA14 8BS.

If you wish to make a comment about the plans please use the box below

Volunteering

Would you consider volunteering to help at your local library?

Yes	No
-----	----

If yes and you would like more information about volunteering in libraries please give your details below:

Email

Phone

Address

About you

Are you:	Male	Female
----------	------	--------

Postcode House name/number

Your age	Under 18	18-24	25-34	35-44
	45-54	55-64	65-74	75+

Are you a member of the library? Yes No

Which library do you normally use?

Do you use any other library?

11 March 2011

Department of Neighbourhood & Planning
County Hall
Bythesea Road
Trowbridge
Wiltshire
BA14 8JN

To:

Your ref:
Our ref: IW/LMW/

Dear

Proposed changes to bus services

As a result of significant reductions in local authority funding, and the Government's insistence that a high proportion of the savings are achieved in the first year, Wiltshire Council has had to make difficult decisions in setting its budget for the 2011/12 financial year. As far as is possible, it is seeking to make savings from improvements in efficiency and procurement, and has also reviewed its charging policies (for example, car parking charges have been increased to provide additional funding to support bus services). However, despite this it will still be necessary to make some reductions in front line services in order to meet the Government's requirements for reduced spending in the forthcoming year.

As a part of this, a package of bus service reductions is proposed that is intended to deliver a saving of £600,000 (around 10% of the existing budget). These will need to be implemented as soon as possible in order to make the required saving during the 2011/12 financial year.

The proposed reductions have been identified according to the Council's published Guidelines for funding of supported services, which were the subject of recent consultation as part of the third Local Transport Plan. The intention behind the proposals is to minimise the impact on users as far as is possible, by spreading the reductions across the county and withdrawing services or journeys where alternatives are available, or which are relatively poorly used or expensive to run per passenger carried.

Although we have to make the required saving, we are confident that the proposals represent the best way of achieving this with the minimum of hardship. Nevertheless, we recognise that reducing services will inevitably have an impact on users, and want to give communities the opportunity to respond if they are aware of particular difficulties that will result. We have therefore made allowance for funding a limited alternative

/Continued Overleaf....

service in some cases, but this will only be possible in specific instances where significant hardship would result, and where a viable and affordable alternative can be identified. This could for example include making use of community and voluntary transport to meet specific identified needs; you may wish to discuss this with local community and voluntary transport groups if appropriate.

With this in mind, this letter is being sent to all town and parish councils, and Area Board members, with an attachment showing details of the proposals that are relevant to your particular area. I would be grateful if you could discuss these locally, and write to me if you are aware of any specific aspects of the proposals that would cause significant hardship. If so, it would be helpful to know how many people will be affected, and what specific journeys they would no longer be able to make.

We will let you know when firm dates have been set for the introduction of the changes. In the meantime, **I would be grateful if you could let me know by 1 May** whether there are any significant concerns in your area, so that we have the opportunity if necessary to investigate alternative provision before the changes are implemented.

The above changes are the first step towards implementing the strategic review of the bus network proposed in the Local Transport Plan. This will include defining 'strategic' and 'local' services, and re-planning the way services are provided to meet local needs and demand in the most cost-effective way. As part of the reviews we will also be seeking to expand the role of community and voluntary transport where local groups and communities are able and willing to help. Town and Parish Councils, and the Area Boards, will be consulted at an early stage of the reviews affecting their area.

Yours sincerely



Ian White
Head of Service Passenger Transport

Direct Line: (01225) 713322
Fax Number: (01225) 713565
Email: ian.white@wiltshire.gov.uk

Proposed Changes to Contracted Bus Services to achieve savings - March 2011

Service	Route	Alteration	Reason	Anticipated intro date
Amesbury & Tidworth area				
63 & 64	Salisbury - Porton - Newton Tony - Cholderton - Tidworth	Significant reduction in service through Newton Toney & Cholderton (currently hourly) and fewer buses from Porton & Winterbournes to Tidworth	Very low usage on journeys not used by students (often less than 4 passengers)	6th June 2011
X5	Salisbury - Amesbury - Durrington & Larkhill	Withdrawal of evening buses from Durrington & Larkhill into Salisbury after 8.30 pm (service from Salisbury to Durrington and Larkhill after 8.30pm to be provided by diverting another bus route)	Low usage after 8.30pm (average less than 5 per journey)	6th June 2011
C2W	Connect 2 Wiltshire Woodford Valley & Shrewton area shared Taxi	Reduction in frequency of Connect 2 Wiltshire shared taxi service in the Shrewton, Amesbury & Woodford Valley area.	Low usage and high subsidy per passenger	6th June 2011
63A	Salisbury - Porton and Winterslow night bus	Withdraw late evening bus (this only runs on Friday and	Low usage and high cost of operation	6th June 2011
X88	Chitterne, Tilshead, Lavington, Erfestoke, Bratton & Hilperton to Bath	Withdrawal of Wednesday & Saturday shoppers bus service from Tilshead	Medium priority non-essential service - alternative services available to Salisbury. Very little use by residents of Tilshead	September 2011 ?
C2W	Connect 2 Wiltshire Wylve Valley service	Withdraw Shared Taxi service serving Wylve Valley and Chitterne	Low usage and high subsidy per passenger. Alternative service to Warminster from Chitterne, and from Wylve valley.	September 2011 ?
Marlborough & Pewsey area				
71	Marlborough to Swindon (Sundays)	Withdrawal of Sunday service (alternative service now available on X5)	Majority of passengers live outside Wiltshire. Swindon Borough no longer able to contribute financially.	June 2011 ?
X2	Marlborough - Froxfield - Hungerford - Newbury	Withdrawal of Saturday "shoppers" bus service from Marlborough to Newbury	Medium priority non-essential service - Marlborough residents have alternative buses to Swindon/Salisbury.	July 2011 ?
X76	Marlborough - Calne - Bromham - Bath	Withdrawal of "shoppers" bus service from Marlboro' to Bath	Medium priority non-essential service - Marlborough residents have alternative buses to Swindon/Salisbury.	September 2011 ?
20	Marlborough - Bedwyn - Hungerford	Reduction in Saturday service to 2 hourly	2-hourly service sufficient to meet demand	July 2011 ?
Other services				

In addition to the changes listed above, alterations are also being made to **service 80 from Marlborough, Burbage and the Collingbournes to Tidworth, Ludgershall and Andover** from 4th April 2011 as the result of the need to retender the contract covering that route. Further details will be provided as soon as possible.

No further changes to Council funded services in these areas are proposed at the current time, and most services are expected to continue to run unchanged apart from the reductions listed above.

Proposed Changes to Contracted Bus Services to achieve savings - March 2011

Service	Route	Alteration	Reason	Anticipated intro date
Amesbury & Tidworth area				
63 & 64	Salisbury - Porton - Newton Tony - Cholderton - Tidworth	Significant reduction in service through Newton Toney & Cholderton (currently hourly) and fewer buses from Porton & Winterbournes to Tidworth	Very low usage on journeys not used by students (often less than 4 passengers)	6th June 2011
X5	Salisbury - Amesbury - Durrington & Larkhill	Withdrawal of evening buses from Durrington & Larkhill into Salisbury after 8.30 pm (service from Salisbury to Durrington and Larkhill after 8.30pm to be provided by diverting another bus route)	Low usage after 8.30pm (average less than 5 per journey)	6th June 2011
C2W	Connect 2 Wiltshire Woodford Valley & Shrewton area shared Taxi	Reduction in frequency of Connect 2 Wiltshire shared taxi service in the Shrewton, Amesbury & Woodford Valley area.	Low usage and high subsidy per passenger	6th June 2011
63A	Salisbury - Porton and Winterslow night bus	Withdraw late evening bus (this only runs on Friday and	Low usage and high cost of operation	6th June 2011
X88	Chitterne, Tilshead, Lavington, Erfestoke, Bratton & Hilperton to Bath	Withdrawal of Wednesday & Saturday shoppers bus service from Tilshead	Medium priority non-essential service - alternative services available to Salisbury. Very little use by residents of Tilshead	September 2011 ?
C2W	Connect 2 Wiltshire Wylye Valley service	Withdraw Shared Taxi service serving Wylye Valley and Chitterne	Low usage and high subsidy per passenger. Alternative service to Warminster from Chitterne, and from Wylye valley.	September 2011 ?
Marlborough & Pewsey area				
71	Marlborough to Swindon (Sundays)	Withdrawal of Sunday service (alternative service now available on X5)	Majority of passengers live outside Wiltshire. Swindon Borough no longer able to contribute financially.	June 2011 ?
X2	Marlborough - Froxfield - Hungerford - Newbury	Withdrawal of Saturday "shoppers" bus service from Marlborough to Newbury	Medium priority non-essential service - Marlborough residents have alternative buses to Swindon/Salisbury.	July 2011 ?
X76	Marlborough - Calne - Bromham - Bath	Withdrawal of "shoppers" bus service from Marlboro' to Bath	Medium priority non-essential service - Marlborough residents have alternative buses to Swindon/Salisbury.	September 2011 ?
20	Marlborough - Bedwyn - Hungerford	Reduction in Saturday service to 2 hourly	2-hourly service sufficient to meet demand	July 2011 ?
Other services				

In addition to the changes listed above, alterations are also being made to **service 80 from Marlborough, Burbage and the Collingbournes to Tidworth, Ludgershall and Andover** from 4th April 2011 as the result of the need to retender the contract covering that route. Further details will be provided as soon as possible.

No further changes to Council funded services in these areas are proposed at the current time, and most services are expected to continue to run unchanged apart from the reductions listed above.

Salisbury City Bus Services

Proposed Service Changes on Weekdays and Saturdays

from 5th June 2011

It is proposed that the following **weekday and Saturday journeys** on the Salisbury City bus network will be withdrawn from 5th June 2011 due to low usage (less than 5 passengers per trip based on data collected during 2010):

Service r1 - section of route from City Centre to Ridings Mead and Salisbury District Hospital

0612 & 0624 - from City Centre to District Hospital on weekdays (*first journey would be at 0636*)

0620 & 0636 - from District Hospital to City Centre on weekdays (*first journey would be at 0648*)

2215, 2245 & 2315 - from City Centre to District Hospital on weekdays and Saturdays (*last journey would be at 2145*)

2222, 2253 & 2323 - from District Hospital to City Centre on weekdays and Saturdays (*last journey would be at 2156*)

Note: As part of this change, it is intended that late evening journeys on service R5 would be diverted via the Ridings Mead area to maintain an evening service to this areas

No alterations are proposed to the section of the R1 route from the City Centre to the Bemerton Heath estate, as this is operated without Council funding.

Service r2 - City Centre to Bishopdown

0630 - from City Centre to Bishopdown on Saturdays (*first journey on Saturdays would be at 0700*)

0634 - from Bishopdown to City Centre on Saturdays (*first journey on Saturdays would be at 0705*)

Service r5 - City Centre to Harnham

0620 - from City Centre to Harnham on Saturdays (*first journey on Saturdays would be at 0640*)

0628 - from Harnham to City Centre on Saturdays (*first journey on Saturdays would be at 0648*)

Service r6 - City Centre to Laverstock

0655 & 0725 - from City Centre to Laverstock on Saturdays (*first journey on Saturdays would be at 0755*)

0702 & 0732 - from Laverstock to City Centre on Saturdays (*first journey on Saturdays would be at 0802*)

Service 10 - City Centre to Devizes Road Top / Fugglestone Red

0707 - from Devizes Road Top to City Centre on Saturdays (*first journey on Saturdays would be at 0737*)

0726 - from City Centre to Devizes Road Top on Saturdays (*first journey on Saturdays would be at 0756*)

In addition , the Saturday afternoon service on this route would be reduced to operate only once per hour.

Service 12 - City Centre to Stratford Road

1430 - from City Centre to Stratford Road on Saturdays (*the last journey on Saturdays would be at 1325*)

1442 - from Stratford Road to City Centre on Saturdays (*the last journey on Saturdays would be at 1340*)

Salisbury City Bus Services

Proposed Service Reductions on Sundays & public holidays from 5th June 2011

It is proposed that the following **Sunday and public Holiday journeys** on the Salisbury City bus network will be withdrawn from 5th June 2011

Service r1 - section of route from City Centre to Ridings Mead and Salisbury District Hospital

All journeys withdrawn after 2005 (the last buses would be at 1945 from City Centre to the Hospital and 1953 from Hospital to the City Centre). In addition, buses would only run once per hour between 1645 and 1945 (instead of ½ - hourly).

No alterations are proposed to the section of the R1 route from the City Centre to the Bemerton Heath estate, as this is operated without Council funding.

Service r2 - City Centre to Bishopdown

All journeys withdrawn after 1945 (the last buses would be at 1925 from the City Centre and 1953 from Bishopdown).

Service r3 - City Centre to Wilton

All journeys withdrawn after 2030 (the last buses would be at 1930 from Wilton and 2010 from the City Centre).

Service r5 - City Centre to Harnham

0620 - from City Centre to Harnham on Saturdays (*first journey on Saturdays would be at 0640*).

0628 - from Harnham to City Centre on Saturdays (*first journey on Saturdays would be at 0648*).

Service r6 - City Centre to Laverstock

All journeys withdrawn after 1700 (the last buses would be at 1635 from the City Centre and 1643 from Laverstock).

Proposed Changes to Contracted Bus Services to achieve savings - March 2011

Service	Route	Alteration	Reason	Anticipated intro date
Cricklade area				
51A	Cirencester - Ashton Keynes - Cricklade - Swindon	Withdrawal of Sunday service	High cost per passenger, and low use by Wiltshire residents. Other contributing authorities expected to withdraw financial support	September 2011 ?
Wootton Bassett Area				
55A	Chippenham - Calne - Lyneham - Wootton Bassett - Swindon	Reduction in frequency of Sunday evening service (after 7pm) from Lyneham and Wootton Bassett to Swindon from hourly to 2-hourly	Sunday evening services classed as lower priority (two hourly service still available)	September 2011 ?
C2W	Connect 2 Wiltshire shared taxi service in the Wootton Bassett / Purton area.	Reduction in frequency of Connect 2 Wiltshire shared taxi service in the Wootton Bassett / Purton area.	Low usage and high cost per passenger	September 2011 ?
Malmesbury Area				
30	Malmesbury Town Service	Reduction in frequency of local town service around Malmesbury to hourly	Hourly service still available	September 2011 ?
51A	Cirencester - Ashton Keynes - Cricklade - Swindon	Withdrawal of Sunday service	High cost per passenger, and low use by Wiltshire residents. Other contributing authorities expected to withdraw financial support	September 2011 ?
Other services				

No further changes to Council funded services in these areas are proposed at the current time, and most services are expected to continue to run unchanged apart from the reductions listed above.

Proposed Changes to Contracted Bus Services to achieve savings - March 2011

Service	Route	Alteration	Reason	Anticipated intro date
Chippenham, Corsham & Calne area				
33 / X33	Chippenham & Calne to Devizes	Reduce service after 4pm on weekdays to hourly	Hourly service still available	July 2011 ?
55A	Chippenham - Calne - Lyneham - Wootton Bassett - Swindon	Reduction in frequency of Sunday evening service (after 7 pm) from hourly to 2-hourly	Sunday evening services classed as lower priority (two hourly service still available)	September 2011 ?
231	Bath - Box - Corsham - Chippenham	Withdrawal of weekday evening extension of service between Pewsham Estate and Calne	Very few passengers on this section of route - alternative facilities available on service 55 by changing buses at Chippenham	July 2011 ?
232	Bath - Box - Corsham - Chippenham	Withdrawal of Sunday evening journeys	Sunday evening services classed as lower priority	July 2011 ?
ZigZag	Trowbridge - Bradford - Melksham - Corsham - Chippenham	Reduction in frequency of service to 2-hourly	Insufficient usage to justify existing frequency	September 2011 ?
X76	Marlborough - Calne - Bromham - Melksham - Kingsdown - Bath	Withdrawal of "shoppers" bus service	Medium priority non-essential service - Calne residents have alternative buses to Swindon and can reach Bath by changing buses at Chippenham	September 2011 ?
272	Urchfont - Devizes - Melksham - Box - Bath	Withdrawal of Sunday evening services (after 6.30 pm)	Sunday evening service classed as lower priority	July 2011 ?
Other service changes				
A revised timetable will be introduced on the ZigZag service (Trowbridge - Bradford - Melksham - Corsham - Chippenham) on 14 March when the service is taken over by a new operator, as a result of Bodman's Coaches decision to withdraw from operating this service.				
Other services				
No further changes to Council funded services in these areas are proposed at the current time, and most services are expected to continue to run unchanged apart from the reductions listed above.				

Proposed Changes to Contracted Bus Services to achieve savings - March 2011

<u>Service</u>	<u>Route</u>	<u>Alteration</u>	<u>Reason</u>	<u>Anticipated intro date</u>
Devizes & Melksham Area				
33 / X33	Chippenham & Calne to Devizes	Reduce service after 4pm on weekdays to hourly	Hourly service still available	July 2011 ?
49	Swindon - Devizes - Trowbridge	Withdraw Devizes-Trowbridge service after 7pm (one journey in each direction)	Low usage	September 2011 ?
272	Urchfont - Lavingtons - Devizes - Melksham - Bath	Withdrawal of Sunday evening services (after 6.30 pm)	Sunday evening service classed as lower priority	July 2011 ?
ZigZag	Trowbridge - Bradford - Melksham - Corsham - Chippenham	Reduction in frequency of Corsham-Melksham-Trowbridge service to 2-hourly	Insufficient usage to justify existing frequency	September 2011 ?
X88	Chitterne, Tilshead, Lavington, Erlestoke, Bratton & Hilperton to Bath	Withdrawal of Wednesday & Saturday shoppers bus service	Medium priority non-essential service - Most passengers can still travel to Bath by changing buses in Trowbridge / Devizes	September 2011 ?
X76	Marlborough - Calne - Bromham - Melksham - Kingsdown - Bath	Withdrawal of "shoppers" bus service from Bromham and Melksham Forest to Bath	Medium priority non-essential service - most users can reach Bath by changing buses at Chippenham or Melksham	September 2011 ?
Other service changes				
Revised timetables will be introduced on services 77/85 (Trowbridge - Devizes via Steeple Ashton, Keevil and Worton); 87 (Trowbridge - Devizes via Westbury and Erlestoke), the Devizes town services, and the ZigZag service (Trowbridge - Bradford - Melksham - Corsham - Chippenham) on 14 March. These are the result of Bodman's Coaches decision to withdraw from operating these services.				
Other services				
No further changes to Council funded services in these areas are proposed at the current time, and most services are expected to continue to run unchanged apart from the reductions listed above.				

Proposed Changes to Contracted Bus Services to achieve savings - March 2011

Service	Route	Alteration	Reason	Anticipated intro date
Westbury & Warminster				
264/265	Warminster - Westbury - Trowbridge - Bradford on Avon - Bath	Withdrawal of Council funding for Warminster - Trowbridge section of route	Existing service expected to be reduced from half hourly to hourly. However additional journeys are also being provided between Warminster and Trowbridge on a commercial basis by another company from 14 March.	July 2011
Westbury Weaver	Westbury to Dilton Marsh, Chapmanslade & Frome, plus Westbury local services	Reduce Westbury Town service and service to Dilton Marsh around school start/finish times and also on Saturday afternoons. Withdraw service between Dilton Marsh, Chapmanslade and Frome between 9am - 5pm.	low usage by general public of these journeys - alternatives available for school children	September 2011 ?
50,54,57	Warminster local services (including to Sutton Veney and the Deverills	Withdraw Warminster local services on Saturday afternoons after 2pm.	Low usage at these times	September 2011 ?
51	Frome - Chapmanslade - Warminster	Withdrawal of Wednesday "shoppers" bus service from Chapmanslade to Warminster	Very low usage (almost nil)	July 2011 ?
C2W	Connect 2 Wiltshire Wylve Valley service	Withdraw Shared Taxi service serving Wylve Valley and Chitterne	Low usage and high subsidy per passenger	September 2011 ?
80	Mere - Kilmington - Maiden Bradley - Frome	Withdrawal of 1530 journey from Frome to Maiden Bradley, Kilmington and Mere (and return) on Saturdays	Very low usage (almost nil). Later bus from Frome at 1630.	1st September 2011?
24	Warminster - A36 villages - Salisbury	Transfer of Salisbury terminus to on-street bus stop	Avoids payment of bus station departure charges levied by Wilts & Dorset on services operated by other companies using their bus station	6th June 2011
X88	Chitterne, Tilshead, Lavington, Erlestoke, Bratton & Hilperton to Bath	Withdrawal of Wednesday & Saturday shoppers bus service to Bath	Medium priority non-essential service - passengers can still travel to Bath by changing buses in Warminster or Trowbridge	September 2011 ?

Other service changes

Revised timetables will be introduced on service **87 (Trowbridge - Devizes via Westbury and Erlestoke)** on 14 March, as the result of Bodman's Coaches decision to withdraw from operating this service.

Other services

No further changes to Council funded services in these areas are proposed at the current time, and most services are expected to continue to run unchanged apart from the reductions listed above.

Proposed Changes to Contracted Bus Services to achieve savings - March 2011

Service	Route	Alteration	Reason	Anticipated intro date
Westbury & Warminster				
264/265	Warminster - Westbury - Trowbridge - Bradford on Avon - Bath	Withdrawal of Council funding for Warminster - Trowbridge section of route	Existing service expected to be reduced from half hourly to hourly. However additional journeys are also being provided between Warminster and Trowbridge on a commercial basis by another company from 14 March.	July 2011
Westbury Weaver	Westbury to Dilton Marsh, Chapmanslade & Frome, plus Westbury local services	Reduce Westbury Town service and service to Dilton Marsh around school start/finish times and also on Saturday afternoons. Withdraw service between Dilton Marsh, Chapmanslade and Frome between 9am - 5pm.	low usage by general public of these journeys - alternatives available for school children	September 2011 ?
50,54,57	Warminster local services (including to Sutton Veney and the Deverills	Withdraw Warminster local services on Saturday afternoons after 2pm.	Low usage at these times	September 2011 ?
51	Frome - Chapmanslade - Warminster	Withdrawal of Wednesday "shoppers" bus service from Chapmanslade to Warminster	Very low usage (almost nil)	July 2011 ?
C2W	Connect 2 Wiltshire Wylve Valley service	Withdraw Shared Taxi service serving Wylve Valley and Chitterne	Low usage and high subsidy per passenger	September 2011 ?
80	Mere - Kilmington - Maiden Bradley - Frome	Withdrawal of 1530 journey from Frome to Maiden Bradley, Kilmington and Mere (and return) on Saturdays	Very low usage (almost nil). Later bus from Frome at 1630.	1st September 2011?
24	Warminster - A36 villages - Salisbury	Transfer of Salisbury terminus to on-street bus stop	Avoids payment of bus station departure charges levied by Wilts & Dorset on services operated by other companies using their bus station	6th June 2011
X88	Chitterne, Tilshead, Lavington, Erlestoke, Bratton & Hilperton to Bath	Withdrawal of Wednesday & Saturday shoppers bus service to Bath	Medium priority non-essential service - passengers can still travel to Bath by changing buses in Warminster or Trowbridge	September 2011 ?

Other service changes

Revised timetables will be introduced on service **87 (Trowbridge - Devizes via Westbury and Erlestoke)** on 14 March, as the result of Bodman's Coaches decision to withdraw from operating this service.

Other services

No further changes to Council funded services in these areas are proposed at the current time, and most services are expected to continue to run unchanged apart from the reductions listed above.

Westbury, Leigh Park – Progress with Adoption of Amenity land

1. Purpose of the Report

- 1.1. To update the Westbury Area Board on progress with the adoption of amenity land on the Leigh Park development

2. Background

- 2.1. The Leigh Park development has areas that have been completed for a number of years and the Wiltshire Council's Technical Manager has attended previous Area Board meetings to report on progress with adopting amenity land in these completed areas.
- 2.2. It was previously agreed that the Technical Manager would report progress to the Area Board every six months.
- 2.3. This report is to inform the Area Board on the latest progress.

3. Main Considerations

- 3.1. As reported to the previous meeting the development has been divided into three phases reflecting the degree of completeness and or complexity of issues involved in the adoption of amenity land.
- 3.2. The phases are shown on the attached drawings in the attached Appendices
- 3.3. Phase One (shown on Appendix One) – the formal inspections have been undertaken and Persimmon Homes are undertaking the identified remedial work. Solicitors have been instructed and it is expected that this phase will be adopted in the next two to three months.
- 3.4. Phase Two (shown on Appendix Two) – the formal inspections of the trees are complete in the Biss Brook reserve. The formal inspections of the amenity land is about to commence. Solicitors will be instructed shortly. Various technical issues around the operation of the balancing ponds remain to be resolved. Assuming there are no major problems this phase should be adopted later this year.
- 3.5. Phase Three – the status of the remaining amenity land will be reviewed regularly with the developer.

4. Implications

4.1. Environmental Impact of the Proposals

None

4.2. Financial Implications

None.

4.3. Legal Implications

None.

4.4. HR Implications

None

4.5. Equality and Diversity Implications

None

5. Recommendation

It is recommended that: the Westbury Area Board note the contents of the report

Ian Brown
Head of Amenity and Fleet

Report Author: Steve Ibbetson
Technical Manager
Tel No: 07979 644613
E-Mail: steve.ibbetson@wiltshire.gov.uk

Appendices: One PDF file 701 and 702.
Two PDF file 703 and 704

Background papers: Previous reports to Westbury Area Board

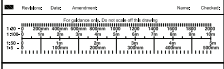
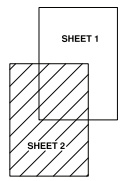


© Crown Copyright 2008. All rights reserved. Licence number 10002849. This map is reproduced by permission of the Controller of Her Majesty's Stationery Office. It is not to be used for any purpose other than that for which it was prepared.



STANDARD ABBREVIATIONS

AS	ASBESTOS	AS	ASBESTOS
BS	BUILDING SURVEILLANCE	BS	BUILDING SURVEILLANCE
...



RPS Design

Client: PERSIMMON HOMES WESSEX LTD

Project: WESTBURY LEIGH
WESTBURY, WILTSHIRE

Type: OPEN SPACE ADOPTION AREAS (Phase 2)
SHEET 2 OF 2

Status: FINAL Checked: []
Drawn: BM Date: AUG 2010 Scale: 1:1250

Job No: ACV5508 Orig No: 704 Rev: []

Area Board Project

1. What is the Initiative?

Creation of a multi media room for use by young people and the wider community

Members of CAYPIG (Community Area Young People's Issues Group) using the town's youth centre have come up with the idea of developing a multi-media room where they could participate in film making, photography, animation and other art, computer skill development and other media opportunities. Currently they have no access to this equipment.

This specialist facility could be housed within the youth centre but would also be available for use by the wider community.

2. Where is the initiative taking place?

At the Youth and Community Centre, Eden Vale Road, Westbury. The multi media centre would be created in a redundant room in the centre.

3. When will the initiative take place?

As soon as funding is available. The group of young people leading this project have already received some funding of £500 from Westbury Town Council and are awaiting the outcome of their funding submissions from The Prince's Trust too, which is match funding against this Area Board bid, so that the development can begin. They have applied to two sources for match funding (as detailed above).

4. What are the Community benefits/evidence of need/links to Community Plan/Community Issue?

Young people and the wider community will benefit from acquiring new skills and having access to specialist media equipment. The Westbury Community Plan highlights:

- The need for more evening and daytime classes (Education Skills and Learning Page 8)
- The need for more activities for younger people especially in rural areas (Culture Page 26) **Note** the youth centre has just launched a rural transport initiative funded by the area board which will provide transport from the villages into Westbury in order for young people to use the town's leisure facilities and take part in activities at the youth centre.

5. What is the desired outcome of this initiative?

To provide up to date and interesting facilities and activities to engage young people and the wider community of the Westbury area. This addition to community facilities will benefit a wide range of people, encourage creativity and boost skills. It is also expected the project will have the knock on effect of increasing usage of the youth centre's other facilities and will lead to greater integration between the centre and the wider community.

6. Who will Project Manage this initiative?

The project will be led by the 20 strong group of CAYPIG members but project managed by the youth and community services manager Sally Willox and her team based at the youth centre.

7. Costs/quotes/ match funding?

£3,400.00 is requested to pay for multi media equipment including computers, specialist programmes, video cameras and editing equipment. The same funds have been requested through The Prince's Trust, so this is a match-funded project. An additional funding bid for £500 was placed through Westbury Town Council, as since submitting the 2 mentioned funding applications, it was decided that a media projector and screen would be necessary. This would be to view/show produced work (films, photography etc.). The £500 has been received but not spent yet.

8. Additional information

Thorough planning has been taking place, along with funding applications being submitted so that this innovative project can commence. Young people have produced a portfolio of plans and are being supported with the process, which will then benefit the community, specifically young people but also other groups. The

group are completing ASDAN Activities and Volunteering Awards, as well as Duke of Edinburgh Awards to reward them for their hard work and achievements. This project is a needs led idea of young people with a core group of 20 young people leading it. However, any young person in Westbury Community Area will be able to access the facility as well as the wider community, due to the facility being on offer to other community groups.

